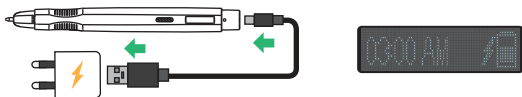


2. Before using the echo II

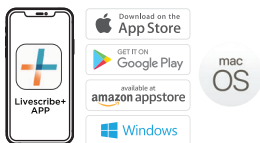
Fully charge via USB. Use 5V chargers or charge using your PC.



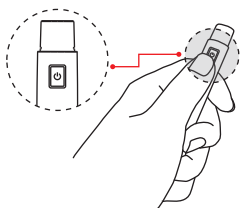
⚠ Do not use any rapid chargers

3. How to Pair Your echo II

3-1. Download & Open Livescribe+ app.

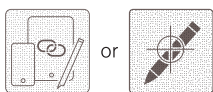


Make sure Bluetooth is enabled

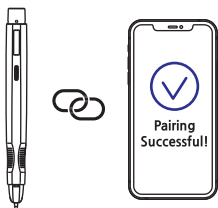
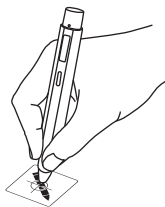


3-2. Press the Power button to turn on the echo II.

3-3. Gently tap the Device Pairing box.



Bluetooth icon will blink fast when it's in discovery mode.



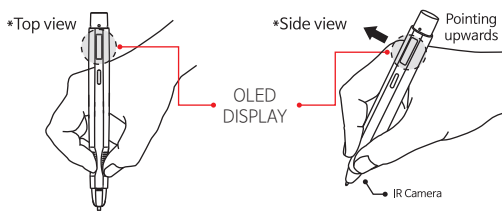
3-4. Launch the Livescribe+ app
And follow the instructions to complete the pairing process.



Pairing is successful when the Bluetooth icon stops blinking.

4. How to Hold the echo II

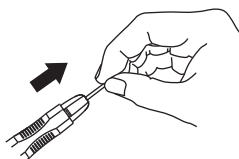
Keep OLED screen pointing upwards, IR camera is below the ink cartridge.



5. Ink cartridge

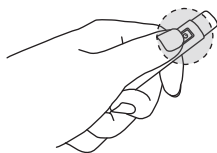
You can easily remove the ink cartridge and insert a new one. Please use echo or echoII ink refills only.

Visit www.livescribe.com for replacement options.



⚠ Other ink cartridges are not compatible

6. Controls



You can use the Record & Playback functions with the power button. Refer to the Power Button Instructions guide for details.

6-1. Power button instructions

Function		Conditions	Action
Power On		Power Off	Tap
Power Off		Power On	Tap&Hold - 3sec
Force reset		-	Tap&Hold - more than 10sec
Record	Start recording	Main Screen	Tap
	Stop recording	Recording	Tap
	Move to main	Not While Recording	Pen down/up on any surface
Playback	Move to Playlist	Main Screen	Double Tap
	Move to Previous	Playlist	Triple Tap
	Move to Next	Playlist	Double Tap
	Select and Play	Playlist	Tap
	Stop Playing	Playing	Tap
	Move to Main	Not While Playing	Pen down/up on any surface